

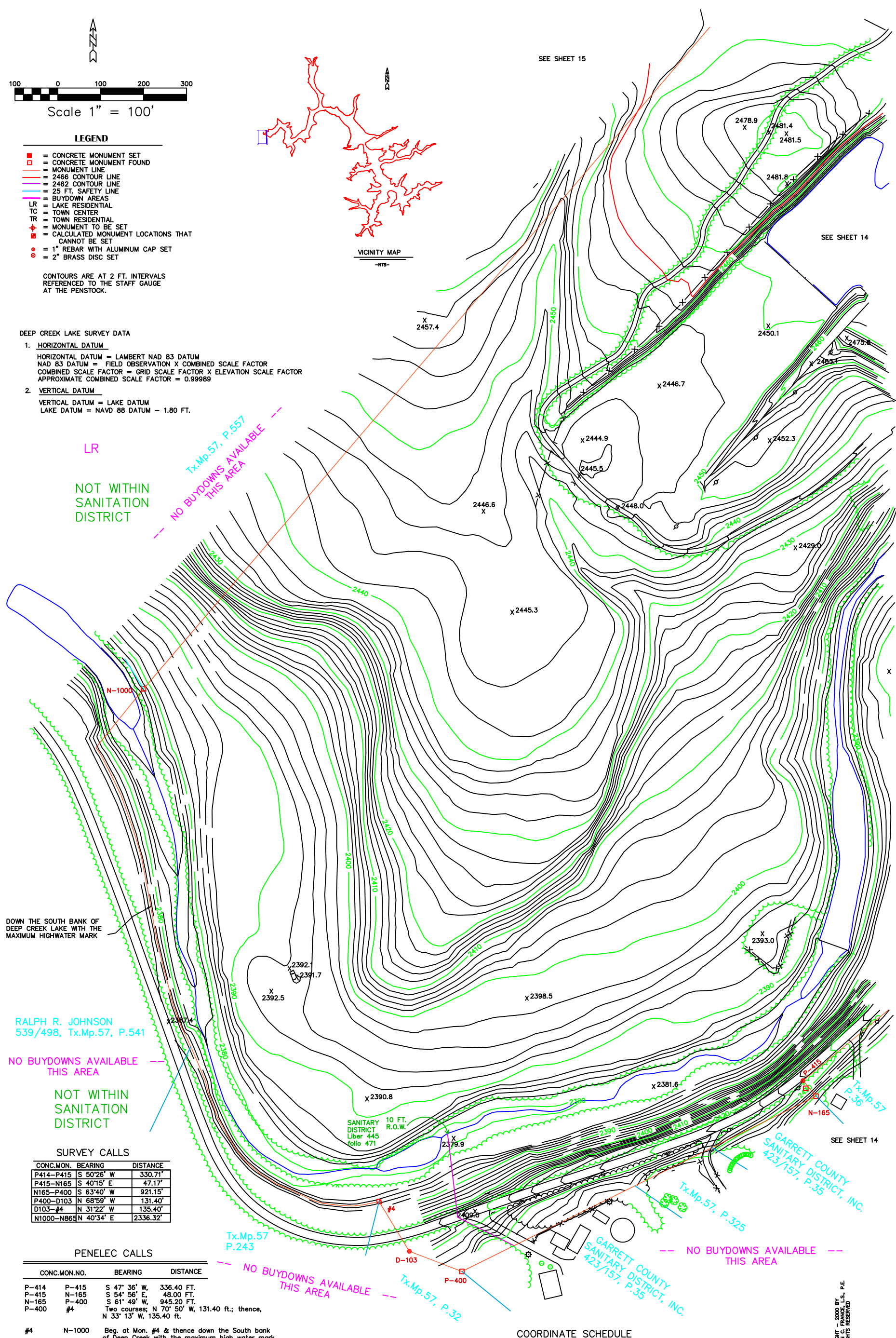
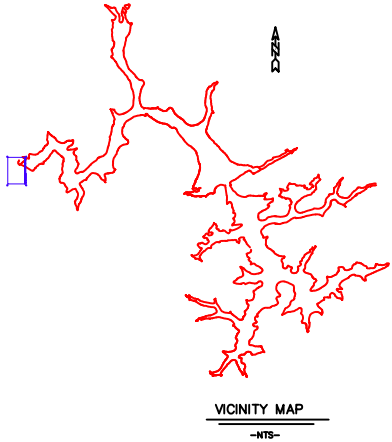
LEGEND

- = CONCRETE MONUMENT SET
- = CONCRETE MONUMENT FOUND
- = MONUMENT LINE
- = 2466 CONTOUR LINE
- = 2482 CONTOUR LINE
- = 25 FT. SAFETY LINE
- = BUYDOWN AREAS
- LR = LAKE RESIDENTIAL
- TC = TOWN CENTER
- TR = TOWN RESIDENTIAL
- ⊕ = MONUMENT TO BE SET
- ⊕ = CALCULATED MONUMENT LOCATIONS THAT CANNOT BE SET
- ⊙ = 1" REBAR WITH ALUMINUM CAP SET
- ⊙ = 2" BRASS DISC SET

CONTOURS ARE AT 2 FT. INTERVALS REFERENCED TO THE STAFF GAUGE AT THE PENSTOCK.

DEEP CREEK LAKE SURVEY DATA

1. **HORIZONTAL DATUM**
 HORIZONTAL DATUM = LAMBERT NAD 83 DATUM
 NAD 83 DATUM = FIELD OBSERVATION X COMBINED SCALE FACTOR
 COMBINED SCALE FACTOR = GRID SCALE FACTOR X ELEVATION SCALE FACTOR
 APPROXIMATE COMBINED SCALE FACTOR = 0.99989
2. **VERTICAL DATUM**
 VERTICAL DATUM = LAKE DATUM
 LAKE DATUM = NAVD 88 DATUM - 1.80 FT.



RALPH R. JOHNSON
539/498, Tx.Mp.57, P.541

SURVEY CALLS

CONC.MON.	BEARING	DISTANCE
P414-P415	S 50°26' W	330.71'
P415-N165	S 40°15' E	47.17'
N165-P400	S 63°40' W	921.15'
P400-D103	N 68°59' W	131.40'
D103-#4	N 31°22' W	135.40'
N1000-N865	N 40°34' E	2336.32'

PENELEC CALLS

CONC.MON.NO.	BEARING	DISTANCE
P-414	P-415	S 47° 36' W, 336.40 FT.
P-415	N-165	S 54° 56' E, 48.00 FT.
N-165	P-400	S 61° 49' W, 945.20 FT.
P-400	#4	Two courses: N 70° 50' W, 131.40 ft.; thence, N 33° 13' W, 135.40 ft.
#4	N-1000	Beg. at Mon. #4 & thence down the South bank of Deep Creek with the maximum high water mark thereof, about 1300 feet; thence, N 39° 05' E, 80 ft.
N-1000	N-865	N 39° 05' E, 2417.00 FT.

COORDINATE SCHEDULE

Mon.	North	East
N165	678440.82	637253.72
P400	678032.18	636428.17
N1000	679389.75	635685.94
P415	678476.82	637223.23
#4	678194.91	636235.03
D103	678079.30	636305.51

© COPYRIGHT 2000 BY MORGAN C. FRANCE, L.S., P.E.
ALL RIGHTS RESERVED.

SHEET NO. 16

DRAWING 16, DAM COVE

DEEP CREEK PROJECT
BUY DOWN SURVEY

PROJECT

DESIGNED BY: MORGAN C. FRANCE, L.S., P.E.
10 North Third Street
Oakland, Maryland 21550
(301) 334-2305

REGISTERED ENGINEERING SERVICES - REAL ESTATE
STATE OF MARYLAND
300 West Preston Street, Room 601
Baltimore, Maryland 21201

DRAWN BY: SUSAN N. EVANS PERANDIO
and MARGARET A. JORDAN
DWG: DMCOVE16
123\C\DATA\EP\PROJECTS\DC\2000\DMCOVE16

APPROVED BY: MORGAN C. FRANCE
PROJ. NO.
Plot date: 7/13/00 at 1:05